

WELCOME TO XI TOUR REPORT

If you have any questions about this report, or would like a demo of the product, please contact us at 403-517-0111.

Your feedback is important to us; should you have suggestions or comments on how to make this product better, we appreciate hearing from you.

[Please contact us at: info@xitechnologies.com](mailto:info@xitechnologies.com) or call our support line: 403-296-0077

Click on the links below to view info on the the Features of the XI Tour Report

Product Overview/Key Features

[Time Graph](#)

[Bit Records](#)

[Drill Summary](#)

[Time Log](#)

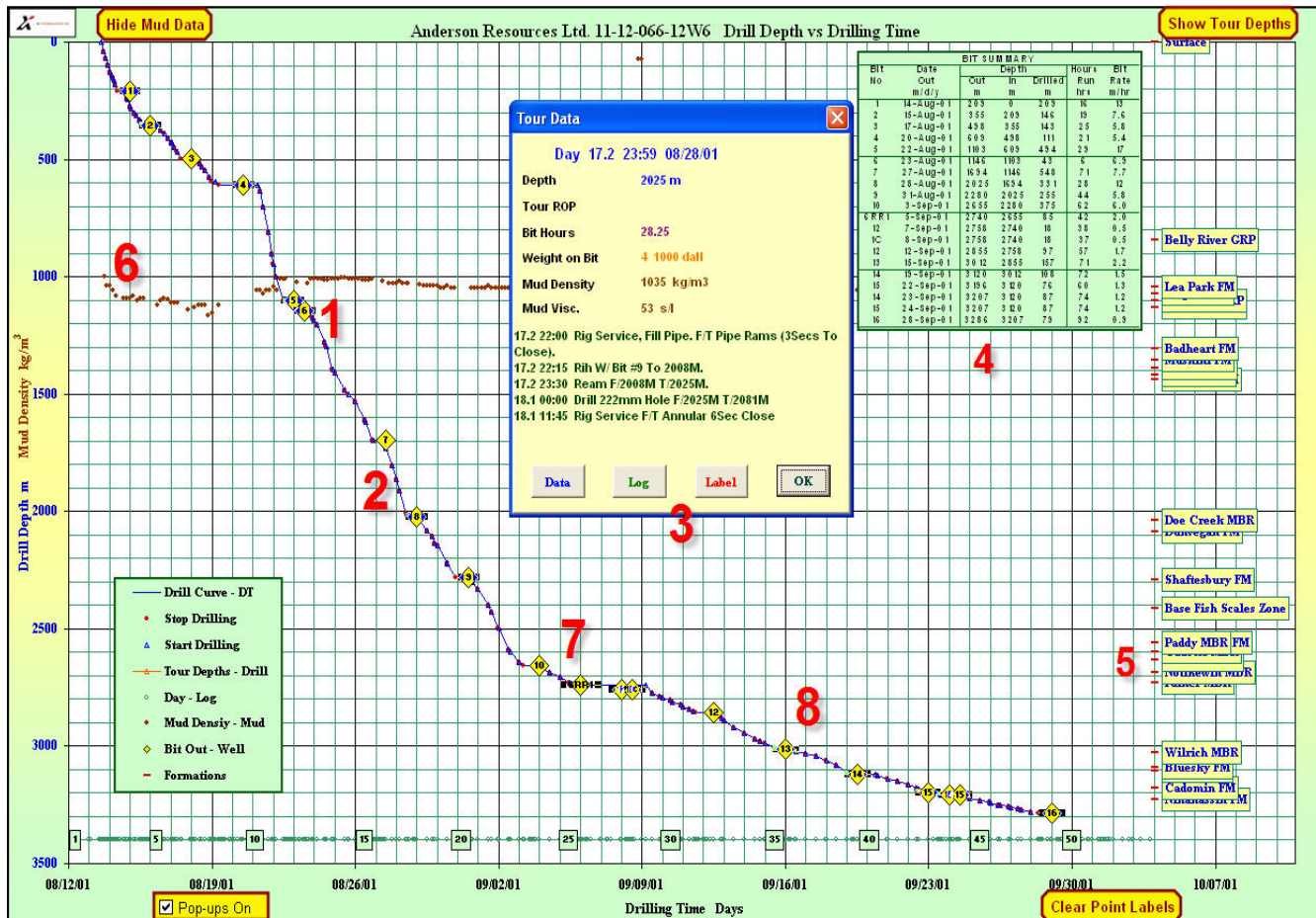
[Mud Records/Materials](#)

[General Well Summary](#)

[Formations](#)

[Other General Features to take note of](#)

Time Graph



The Time Graph is a graphical representation of the drill. Provides high-level summary info, but also acting as a guide to the more detailed information in behind.

1. Bit Changes plotted on the curve
2. Quick-access summary info available with a single click
3. Link to backup sheets via summary pop-up
4. Bit summary included
5. Tops shown on far right
6. Mud Density shown (Optional. If desired you can hide the Mud Data)
7. Label notable points on the graph using either data within the report or manual entry.
8. Using Time Log data, the Time/Depth intervals are more precise (Optional. If desired, click Show Tour Depths to show the drill curve based on the Meters Drilled section instead.

[Back to Index^](#)

Bit Records



5 separate databases in combined to give a layout of the specific bit details:

- Thorough summary of each bit used throughout the well
- final bit condition when pulled
- Performance summaries of each bit

Drill Summary



On a tour-by-tour basis, a report of the drill history of the well. How many meters drilled, the operation (drilling/reaming/coring), rotary statistics, and weight on bit.

Time Log



The time log holds the core value of tour sheets information: the comments directly from the rig manager. Time codes broken down, detailing the time spent specific to 15 minute intervals. The comments within are the core to understanding the drilling of this well

Mud Records/Materials



Many secrets can be found on a well by the tracking mud statistics on a well. Everything in a tour sheet related to mud can be found within the Mud sheet and Materials sheet. If large amounts of sawdust was used, you can tell they anticipated/encountered losses. If the density rises rapidly, they are encountering higher pressures...etc.

The Materials have been broken down by surface hole, intermediate, and main hole for increased clarity on the materials used throughout the well.

General Well Summary



Everything else you need to know about the well...contractor, rig manager, casing/tubing information, producing pool, rig details, etc.

Formations



XI has included not only the government reported tops on the well, but also a brief tops analysis which averages tops from all wells within 3 km. By default, we will always use the well's tops, unless no specific tops are available.

Other General Features To Take Note Of

Use Excel's sorting and filtering to narrow your data based on the criteria of choice.

[Back to Index^](#)